

Trust & Identity Incubator Status notifications activity

Mihály Héder

Sprint Demo, 2020-02-03

Public

www.geant.org



Overview

- Several tools reporting the status of the eduGAIN metadata:
 - Quality of the metadata (contacts, urls, etc)
 - Connection status of SPs and IdPs
 - Entity categories
 - Attribute checks (live interaction)
- Current tools (mostly relying on the eduGAIN metadata itself)
 - CoCo monitor
 - ECCS (eduGAIN Connectivity Check Service)
- Status intake is considered lackluster:
 - Data is not always readily available
 - Somewhat tedious to “sift” through the data
 - Irregular checks
- No automated notifications

Show SPs with status: green white yellow red Show all records

entityID	registrationAuthority	DisplayName	First seen	Last seen	CoCo found	Status	Comment	PrivacyStatementURL	Status code	Status text	Con typ
SP data											
					Last test results						
					Yes	All					
http://dev-us.cloudmore.com/shibboleth	http://www.swamid.se/	Cloudmore	2017-11-09 03:07:38	2019-12-17 03:10:44	Yes	All attributes present, privacy statement has a...		http://web.cloudmore.com/privacy/cloudmore-...	200	OK	text/
http://dev.cloudmore.com/shibboleth	http://www.swamid.se/	Cloudmore	2017-09-15 03:07:33	2019-12-17 03:10:43	Yes	All attributes present, privacy statement has a...		http://web.cloudmore.com/privacy/cloudmore-...	200	OK	text/
http://is.liu.se/adfs/services/trust	http://www.swamid.se/	Linköping University	2014-11-14 03:07:14	2019-12-17 03:10:37	Yes	All attributes present, privacy statement has a...		https://liu.se/en/article/policy-for-hantering-av-...	200	OK	text/
http://fse.eduni.fi/adfs/services/trust	http://www.csc.fi/haka	Eduni	2015-04-22 03:13:20	2019-12-17 03:10:30	Yes	All attributes present, privacy statement has a...		https://wiki.eduni.fi/display/info/Eduni+Priva-...	200	OK	text/
http://local.cloudmore.com/shibboleth	http://www.swamid.se/	Cloudmore	2017-09-15 03:07:33	2019-12-17 03:10:44	Yes	All attributes present, privacy statement has a...		http://web.cloudmore.com/privacy/cloudmore-...	200	OK	text/
http://prestaging.cloudmore.com/shibboleth	http://www.swamid.se/	Cloudmore	2017-09-15 03:07:31	2019-12-17 03:10:43	Yes	All attributes present, privacy statement has a...		http://web.cloudmore.com/privacy/cloudmore-...	200	OK	text/
http://scalgo.com/ssl/waf	http://www.wayf.dk	SCALGO Live	2018-08-11 03:08:04	2019-12-17 03:10:29	Yes	All attributes present, privacy statement has a...		http://scalgo.com/en-US/privacy-policy	200	OK	text/
http://sp.lat.csc.fi	http://www.csc.fi/haka	LAT - Language Archive Tools	2013-10-01 20:35:19	2019-12-17 03:10:30	Yes	All attributes present, privacy statement has a...		https://lat.csc.fi/corpora/info/Lat_Privacy_Poli-...	200	OK	text/
http://sp.vs1.corpora.uni-hamburg.de	https://www.aai.dfn.de	HZSK - University of Hamburg	2015-05-28 14:30:51	2019-12-17 03:10:59	Yes	All attributes present, privacy statement has a...		https://corpora.uni-hamburg.de/hzsk/en/privac-...	200	OK	text/
http://staging-us.cloudmore.com/shibboleth	http://www.swamid.se/	Cloudmore	2017-11-09 03:07:38	2019-12-17 03:10:44	Yes	All attributes present, privacy statement has a...		http://web.cloudmore.com/privacy/cloudmore-...	200	OK	text/
http://staging.cloudmore.com/shibboleth	http://www.swamid.se/	Cloudmore	2017-09-15 03:07:32	2019-12-17 03:10:43	Yes	All attributes present, privacy statement has a...		http://web.cloudmore.com/privacy/cloudmore-...	200	OK	text/
http://sts.edunjoeopen.nl/adfs/services/trust	http://www.surfconext.nl/	EDUgroeopen	2015-04-25 03:41:21	2019-12-17 03:11:24	Yes	All attributes present, privacy statement has a...		https://login.edunjoeopen.nl/privacy	200	OK	text/
http://us.cloudmore.com/shibboleth	http://www.swamid.se/	Cloudmore	2017-11-09 03:07:39	2019-12-17 03:10:45	Yes	All attributes present, privacy statement has a...		http://web.cloudmore.com/privacy/cloudmore-...	200	OK	text/
http://www.clarin-pl.eu/shibboleth	https://www.aai.dfn.de	CLARIN-PL repository	2015-06-16 03:11:26	2019-12-17 03:11:00	Yes	All attributes present, privacy statement has a...		http://clarin-pl.eu/en/privacy-policy/	200	OK	text/
https://aai.openaire.eu/proxy/module.php/sam-...	https://aai.gnet.gr/	OpenAIRE	2018-03-15 03:12:32	2019-12-17 03:11:23	Yes	All attributes present, privacy statement has a...		https://www.openaire.eu/privacy-policy	200	OK	text/
https://acdh.oew.ac.at/shibboleth	https://www.aai.dfn.de	ACDH-OAW Services for Digital Humanities	2018-02-14 03:19:03	2019-12-17 03:11:00	Yes	All attributes present, privacy statement has a...		https://arche.acdh.oew.ac.at/browse/privacy	200	OK	text/
https://agenda.ct.infni.it/shibboleth	http://www.idem.garr.it/	Agenda provided by INFN Catania	2015-06-13 03:12:21	2019-11-21 03:13:50	Yes	All attributes present, privacy statement has a...		http://agenda.ct.infni.it/privacy-policy	200	OK	text/
https://api.etais.ee/api-auf/saml2/metadata/	http://aai.edn.ee	ETAIS Self-service	2017-05-12 03:15:15	2019-12-17 03:09:32	Yes	All attributes present, privacy statement has a...		https://minu.eis.ee/et/et/privacy-policy-full...	200	OK	text/
https://arche.acdh.oew.ac.at/shibboleth	https://www.aai.dfn.de	ARCHE - A Resource Centre for Humanities	2018-02-14 03:19:03	2019-12-17 03:11:00	Yes	All attributes present, privacy statement has a...		https://arche.acdh.oew.ac.at/browse/privacy	200	OK	text/
https://archive.mpi.nl	https://www.aai.dfn.de	MPI-PL Archive	2018-01-30 03:18:13	2019-12-17 03:11:03	Yes	All attributes present, privacy statement has a...		https://sp.mpi.nl/privacy/privacy_statement.html	200	OK	text/

Records found: 148

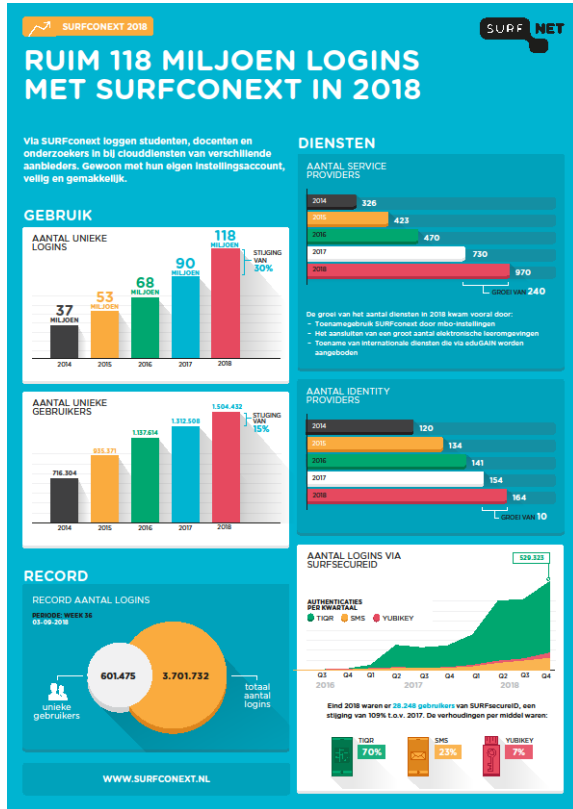
1 2 3 4 5 6 7 8 >

Shanghai Normal University	https://idp-carsi.shnu.edu.cn/idp/shibboleth	https://www.carsi.edu.cn	T: chub@shnu.edu.cn	2019-12-16 04:31:36	No-eduGAIN-Metadata	View
IRCCS Santa Lucia - Roma	https://idp-slucia.irccs.garr.it/idp/shibboleth	http://www.idem.garr.it/	T: idpcloud_service@garr.it S: grant.office@hsantalucia.it	2019-12-16 04:31:36	OK	View
PUCCAMP - Pontificia Universidade Catolica de Campinas	https://idp.puc-campinas.edu.br/idp/shibboleth	http://cafe.rnp.br	T: infra.servidores@puc-campinas.edu.br	2019-12-16 04:31:36	OK	View
HSR - Hospital Sao Rafael S A	https://idpv3-hsr.hsr.com.br/idp/shibboleth	http://cafe.rnp.br	T: marcus.lima@rededor.com.br	2019-12-16 04:31:36	OK	View
FAPCE - Faculdade Paraíso do Ceará	https://shibboleth.fapce.edu.br/idp/shibboleth	http://cafe.rnp.br	T: interatividade@fapce.edu.br	2019-12-16 04:31:35	TCP/IP-Error	View
Vilnius University	https://sso.vu.lt/SSO/saml2/idp/metadata.php	https://fedi.litnet.lt	T: sso-admin@vu.lt	2019-12-16 04:31:35	FORM-Invalid	View
UFFS - Universidade Federal da Fronteira Sul	https://cafe-02.uffs.edu.br/idp/shibboleth	http://cafe.rnp.br	T: diui.diapi@uffs.edu.br	2019-12-16 04:31:33	OK	View
Florida State University	https://idp-staging.fsu.edu	https://incommon.org	T: obegon@fsu.edu T: rhaque@fsu.edu	2019-12-16 04:31:33	FORM-Invalid	View
INMETRO - Instituto Nacional de Metrologia Qualidade e Tecnologia	https://cafe02s.inmetro.gov.br/idp/shibboleth	http://cafe.rnp.br	T: epmatoes@inmetro.gov.br	2019-12-16 04:31:33	OK	View
UESC - Universidade Estadual de Santa Cruz	https://shibboleth.uesc.br/idp/shibboleth	http://cafe.rnp.br	T: cmacedo@uesc.br	2019-12-16 04:31:33	OK	View
UNINTA - Centro Universitario NTA	https://shibboleth.uninta.edu.br/idp/shibboleth	http://cafe.rnp.br	T: andersonbarbosa@uninta.edu.br	2019-12-16 04:31:32	HTTP-Error	View

Proposed work

- Process the data
 - Identify and extract the current issues, per entity, per federation
 - Propose solutions for identified issues (if possible)
 - Presentation of the data
- Create a notification system:
 - Emails, tickets, etc?
 - Automated notification

Example of the infographic



- Data per entity
 - E.g. missing contacts, urls
- Data per federation
 - Sirtfi, CoCo, etc.
- General overview

Achievements

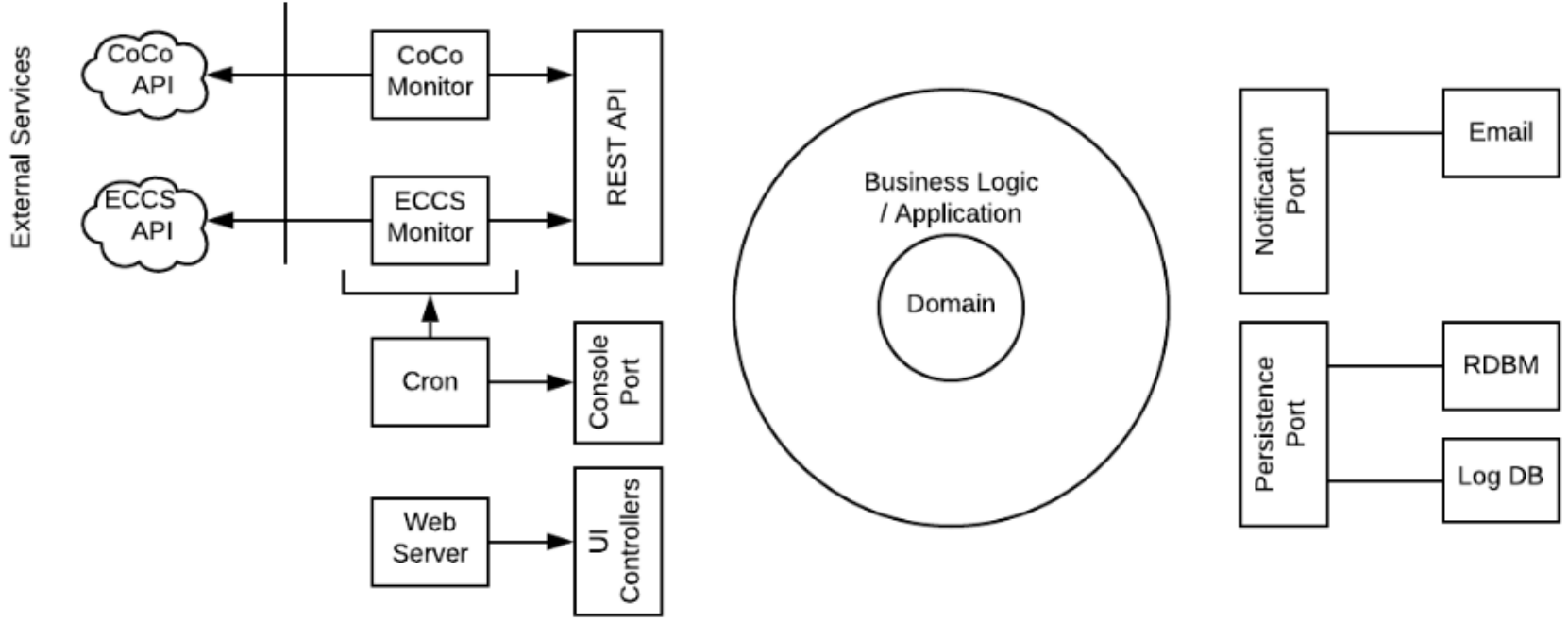
- Identify stakeholders, hold initial discussions
 - One more meeting to be scheduled
- Input collected:
 - Be nice
 - Involve federation operators
 - Stick with the “official” data (eduGAIN db)
 - Separation of monitoring (including notification) and visualization



Status and next steps

☐ Done:

- Identify stakeholders
- Identify source of data
- Architecture proposal
- https://docs.google.com/document/d/1_CPAWQFJivYi48GubBPmuYOIKcio6-VH2fkgFyo0cxw/edit





Status and next steps

□ Next:

- Finish interviews (maybe tomorrow)
- Start implementation (starts around now)

☐ Blocker:

- None (so far)

Thank you

Any questions?

www.geant.org

