



SEE Identity Federation Training

eduGAIN Policies and Membership

April 20, 2021

Slides v1.0

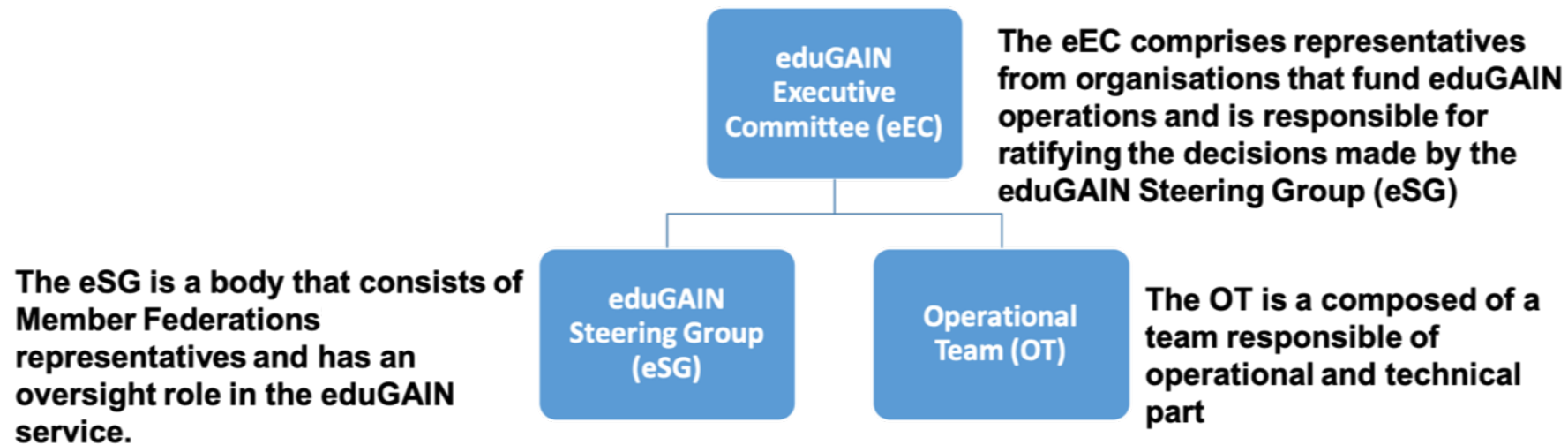
www.geant.org

eduGAIN Constitution

- The eduGAIN service enables National Federations to interfederate. The Member Federations primarily serve the authentication and authorization interests of research and education sectors.
- An Entity (SP/IdP) is always registered by a Participant Federation which uses an appropriate mechanism to exchange its metadata stream of Entities via eduGAIN as described in the Technology Profiles. **It means that an Entity can't join eduGAIN directly without being registered by a federation.**

<https://technical.edugain.org/doc/eduGAIN-Constitution-v3ter-web.pdf>

Governance and Governing Bodies

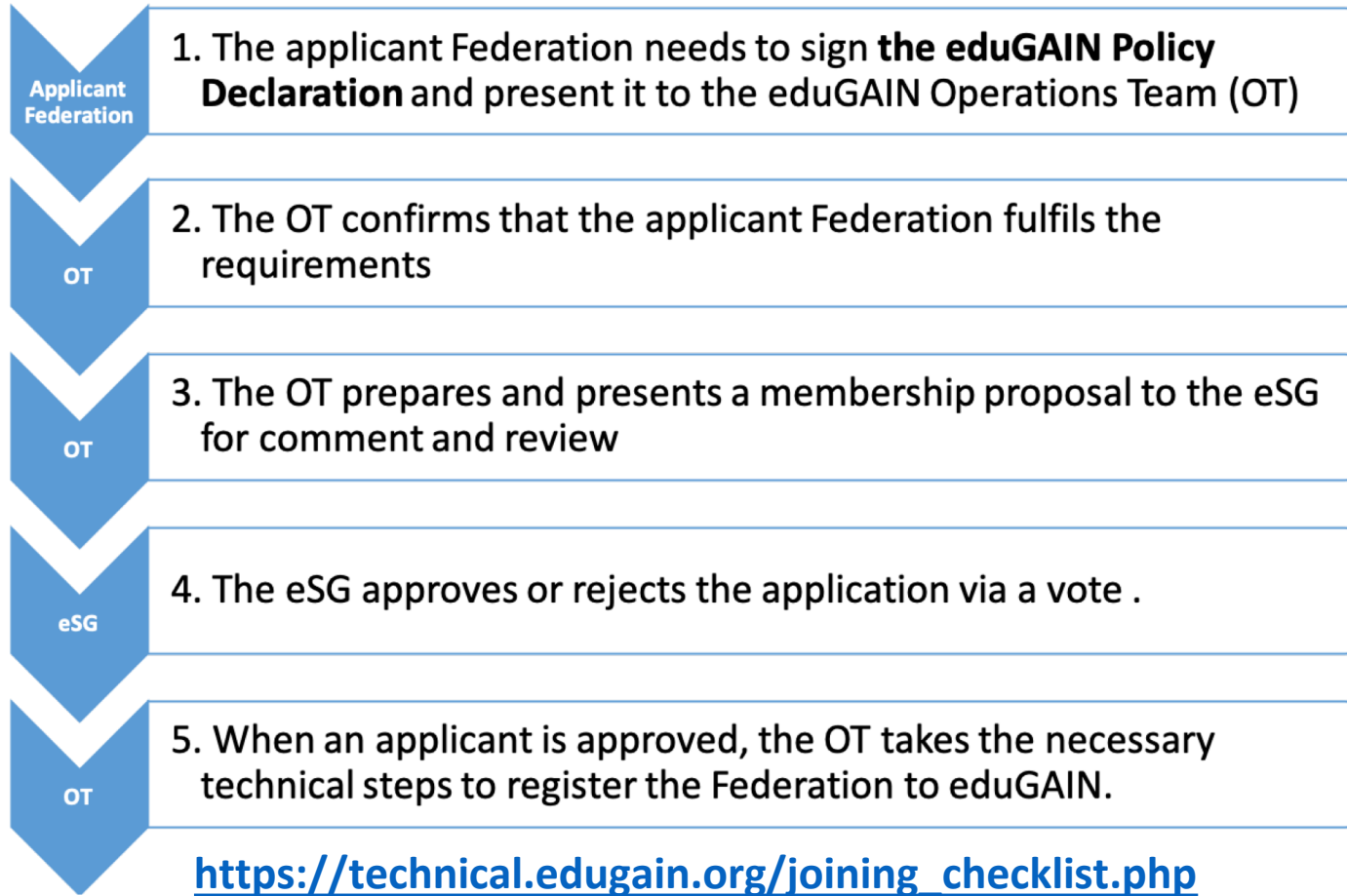


Prerequisites to join eduGAIN as a Federation

- Participant Federations **MUST**:
 - **Primarily serve the interests of the education and research sector.**
 - Provide a point of contact for their Members for dealing with technical issues.
 - Provide processes for handling complaints and incidents involving their Members.
 - **Meet the requirements of the eduGAIN Policy Declaration.**
 - Have an agreement defining federation membership between the Federation and its members (typically known as a Federation Policy or Metadata registration practice statement).

EduGAIN Policy Declaration: <https://technical.edugain.org/doc/eduGAIN-Declaration-v2bis-web.pdf>

How to join eduGAIN as Identity Federation



Joining steps: Non-technical

1. The first steps towards joining eduGAIN is to register the Federation's interest in joining by communicating this to the eduGAIN Operations Team. Send an email message to edugain@geant.org stating the interest to join eduGAIN and containing contact details (email address, full name) for eduGAIN related matters.
2. A person who is authorized to represent the federation should then sign the printed document and send it to the postal address of the eduGAIN Operations Team:

eduGAIN c/o GÉANT
Level 6
Hoekenrode 3
1012BR Amsterdam
The Netherlands

A scanned version of the signed declaration should be sent via signed email to the following address edugain@geant.org.

Joining steps: Technical

Being an eduGAIN Member federation on a technical level mostly means exchanging SAML2 metadata with eduGAIN.

There are basically two metadata files exchanged between a federation operator and eduGAIN:

- 1. eduGAIN Upstream metadata:** The upstream metadata contains all entities (IdPs and SPs) of a member federation that should be included in eduGAIN metadata. The upstream metadata is provided by the federation operator for consumption by the eduGAIN Metadata Distribution Service (MDS).
- 2. eduGAIN Downstream metadata:** The eduGAIN Downstream metadata contains all entities in eduGAIN. It is generated and published by the eduGAIN Metadata Distribution Service (MDS)

Joining steps: Technical

Provide the necessary Federation information:

- The URL where the Federation publishes its metadata.
- The signing certificate with which Federation metadata is signed.
- The full names and email addresses of the delegate and the deputy delegate of the Federation.
- The URL pointing to the website (English version, if available) of the Federation.
- The URL pointing to the English version of Metadata Registration practice statement (MRPS) for the federation.
- The URL pointing to the English version of the Federation's policy.

Technical requirements to join eduGAIN as a Federation

1. **Be compliant with the eduGAIN SAML 2.0 Metadata Profile if it decides to exchange the metadata of Entities via eduGAIN**
2. **Before joining eduGAIN you might want to consider how the entities (Identity and Service Providers) in your federation can join eduGAIN.** There are basically two choices:
 - **Opt-In:** In this model each Service Provider (SP) and Identity Provider (IdP) of a federation has to do something to get included in eduGAIN.
 - **Opt-Out:** In this model Service Provider (SP) and Identity Provider (IdP) of a federation don't have to do anything specifically to be exposed to eduGAIN

For new Federations which do not have many IdPs and SPs, it's better to start with the Opt-In model.

If the number of IdPs and SPs increase considerably, a good choice is to use the opt-out model for IdPs and an opt-in model for SPs

Guide for Joining eduGAIN as a Federation :
<https://wiki.geant.org/display/eduGAIN/Guide+for+Joining+eduGAIN+as+a+Federation>

Thank you

Any questions?

www.geant.org

