

AI - Impact on R&E

Personalized Learning

- Adapts to individual student needs
- Provides real-time feedback
- Identifies learning gaps quickly
- Customizes pace and difficulty
- Breaks down language barriers

EDUCATION

Teaching Support

- Automated grading and feedback
- Content creation assistance
- Administrative task automation
- Intelligent tutoring systems

Enhanced Data Analysis

- Processes massive datasets quickly
- Identifies patterns humans miss
- Accelerates research timelines

RESEARCH

Research Tools

- Automated literature reviews
- Hypothesis generation
- Predictive modeling
- Lab automation and experiment optimization

Interdisciplinary Benefits

- Enables cross-field discoveries
- Combines insights from multiple domains
- Creates new research methodologies

IMPACT (GÉANT Community)

Generative AI

- Use wherever possible (content generation)
- Removes human error (data relationships)

FAIR for F-AI-R

- FAIRhub and AI READI project (example)
- Access to Open/Brokered/Contracted data

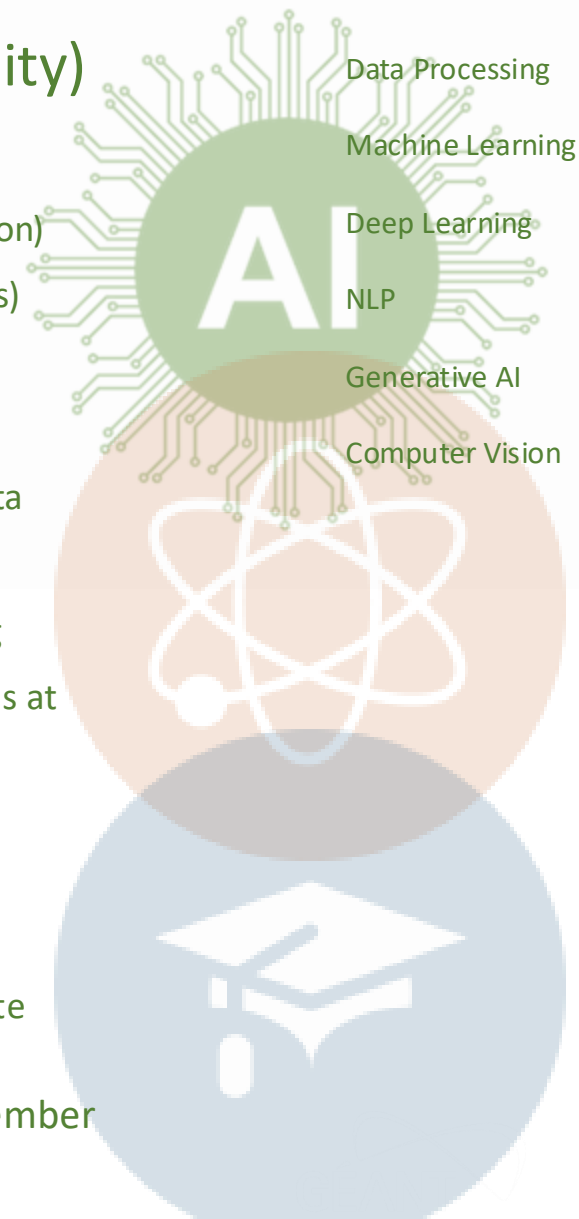
TRE (Trusted Research Environments)

- Secure research data hosting and sharing
- Algorithm (ML) based compute workloads at the cloud edge

GÉANT SERVICES IMPACTED

1. **AAI** – Data/Services brokering
2. **AtN** – Procurement/DRE/TRE
3. **Network** – Data visitation/Edge compute

*****SIG-AI 1st Meeting 2024** – 11 December



(Anthropic (2024). Claude [Large language model], accessed 21st October 2024)



SIG-MSP, Poznan

AI usage and plans in DeiC

Strategiske pejlemærker

24th October 2024
Head of NREN Martin Bech
martin.bech@deic.dk

Activities in DeiC that include AI

Services:

- Speech-to-text services Amberscript and the REACH module in Panopto
- OCRE includes a range of AI-based services (including training and usage of LLMs)
- Development and sharing of recipes for running a license free LLM on your own laptop/server. The results of this is presented at the annual DeiC users' conference next week.

Ideas for new services:

- A self-hosted environment for running trained AI models
- Analysis of logfiles and traffic statistics, based on AI (although that may be stretching what AI is capable of)
- Whisper - an AI based speech-to-text function
- Generation of meta data for datasets as part of our data management services
- Creating data management plans

For our internal productivity:

- Code revision/development
- Translation, text analyses and documentation
- Our own LLM/GPT, trained on our own content
- A component in the workflow of processing applications (but then we have serious concerns about the transparency and objectivity of the our decisions)





AI @ NORDUNET

SIG MSP, Poznan, 24 October 2024



AI AT NORDUNET

- No major initiatives
 - Follow the developments
 - Allow for experimentation
 - Make resources available
- Pilot adoption where there's an immediate use case (for existing services)
- Impact on future strategic objectives being evaluated



$$x = \frac{-b \pm \sqrt{b^2 - 4ac}}{2a}$$
$$\int (2x + 4) dx = 3x^3 + x^2 + 4x + C \Big|_0^3 = 102$$
$$e^{x+iy} = e^x (\cos y + i \sin y)$$





PILOTS

WIFI network management (MIST)

Home > Silent revolution in conference networks

Silent revolution in conference networks



July 2, 2024

At the recent TNC24 conference in Rennes (hosted by RENATER, ed.), a group of researchers from NORDUnet used Artificial Intelligence to improve the quality of Wi-Fi at the conference. Setting up a network for a conference is like being a referee at a sports event. About your performance, you have done a good job. Still, four engineers from NORDUnet made a noteworthy effort as they set up the network for the TNC24 conference in Rennes, France.

Research in networks

From NORDUnet 12 September, 2024

Streaming Video Subtitles

The video player shows a presentation slide with the following content:

- Logos: Sikt, Juniper (driven by Mist AI), Ciena, NOKIA
- Title: High Touch in a nutshell
- Diagram 1: High Touch Nodes at all ESnet Edge Routers
- Diagram 2: A circular network diagram with a central 'Data Lake' and text: '100% Packet Inspection' and '100% Perimeter Coverage'. Below it: 'Perimeter for all traffic'.
- Diagram 3: Hardware stack including 'Beefy FPGA Host Servers', 'Xilinx 2x100G x2', and 'NOKIA 400G Routers'. A box above says 'Data Lake 2 PB Fast SSD + CEPH'. An arrow points to 'Telemetry to Data Lake'.
- ESnet logo at the bottom right.

Video player controls: 03:29 / 01:19:25, volume icon, CC icon, settings icon, and a '49' comment count.



THANK YOU!

Lars Fischer

<lars@nordu.net>

Impact of AI on SURF

Thijs van der Horst

SIG MSP, 24 October 2024



| Impact of AI (1/2) – Making SURF AI-ready



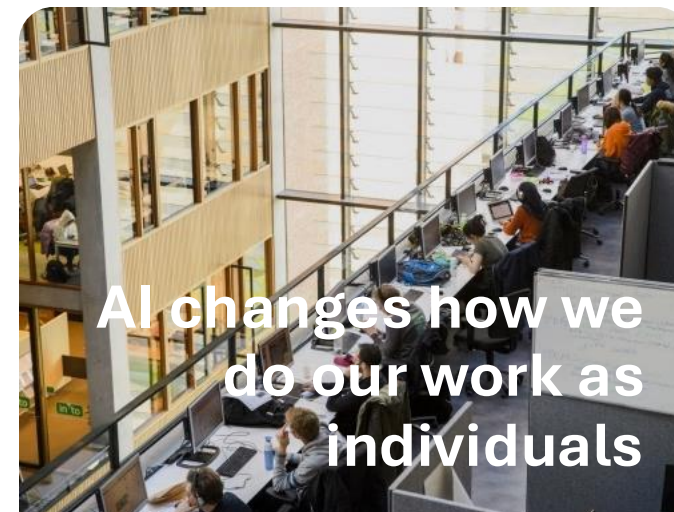
AI affects our ecosystem and therefore our positioning

- Facilitate strategic discussions
- Support prioritization
- Strategic decision making
- Internal coordination & expertise sharing



AI impacts our operations

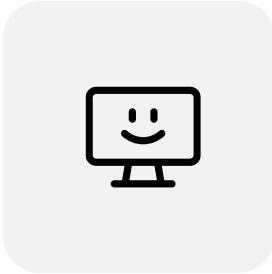
- AI act preparation, responsible AI guidelines
- Impact on services review



AI changes how we do our work as individuals

- Internal pilots: e.g., code generation, generative models, assistants
- Literacy building, best practices

| Impact of AI (2/2) – Fulfilling our mission



Services

Microsoft *Copilot* pilot
'AI in science' consulting
AI factory
Catalogue Management
AIOps



Association

AI courses, month of AI in education, webinars

With *Npuls*: improve sector alignment, knowledge transfer



Innovation

Exploring the feasibility of a generative AI hub (a.k.a. *WILLMa*)

Towards trustworthy foundation models (a.k.a. *GPT-NL*)

Exploring AI maturity models and their applicability to our use cases

A man with a beard and sunglasses is pointing directly at the camera. A black rounded rectangular overlay is positioned over his hand, containing the word "SURF" in white, bold, uppercase letters. The background is blurred, showing a light-colored wall and a window with blinds.

SURF

Status of AI Activities in HEAnet

- HEAnet at the “experimental stage”
- Microsoft CoPilot, ChatGPT
- Software Development / config generation
- AI a feature of new Strategy 2025 – 2030 (launched in November conference)
- Concerns re compliance, risks but also opportunities e.g. automation
- AI policy in development – driven by strategy, AI Act & FOMO
- Next stage, approval mechanism & governance





CSC – IT Center for Science Ltd

www.csc.fi



Total turnover: **90 Meur**
Funet NREN volume: **9 Meur**
AI volume: **3 Meur**



www.lumi-supercomputer.eu

CSC provides **comprehensive AI infrastructure** for our users and AI consultation services **primarily using our own infrastructure**. On some cases commercial clouds are used (e.g. Azure AI).

CSC's AI activities are funded by CSC, Ministry of Education and Culture, Academy of Finland...etc.

Total employees: **670**
Funet NREN FTE's: **25**
AI related FTE's: **20**



Current AI service portfolio

- ❖ AI-HPC computing environments (LUMI, Mahti-AI, Puhti-AI)
- ❖ AI cloud capacity (cPouta, ePouta)
- ❖ AI container capacity (Rahti)
- ❖ AI/ML expert support
- ❖ AI consultation

Strategic goals under finalisation:

- 1) Enabling **bleeding edge** AI development
- 2) Integration of **data resources** with AI systems
- 3) Supporting customer organisations in **AI transformation**

- ❌ NO AI services for clients
- ✅ AI in research projects
 - Network security
 - Machine learning since 2014
 - LLM in last three years
 - 💰 by research projects
 - About 6 final theses a year
- ✅ AI in daily work
- 💡 Aspiration: AI handling L1 Service Desk



Key AI Projects and Initiatives

1. Project BrAIIn

A strategic project using AI to optimize learning and education through personalized recommendations for students and teachers in Croatian schools and development of curriculum and digital educational content in the field of AI

2. AI in Customer Support

Pilot of Watson Chatbot: Deployed in domain support, assisting users by automating responses to frequently asked questions

IBM watsonx Integration: Email Categorization and Response Generation: Using Retrieval-Augmented Generation (RAG) to streamline email sorting and response times.

Focused on reducing unnecessary manual tasks and speeding up responses during high-demand periods.

AI@Sikt

- cross-organisational AI support team
 - build up competence systematically
 - help with implementing AI
- Optimise processes and services
 - ease documentation search (Feide)
 - auto-tagging suggestions for incoming tickets based on history
 - increased code quality in shared IAM
 - started: include in ethics assessment service for research project
- AI-Chat
 - legal, financial, contractual buffer + store as little as possible, universal access
- AI-assistant
 - platform for scoped chats
 - encrypted storage of prompt history
 - use cases both in primary/secondary education and HE&R

The screenshot displays the 'KI-assistent' web interface. On the left is a navigation sidebar with 'Home', 'Explore', and 'Admin'. The main content area is titled 'My assistants' and features a '+ Create' button. Below this are filters for 'Templates', 'Recent', 'Mine', and 'Shared with me', along with a search bar. A grid of eight AI assistant cards is shown, each with a unique character and a brief description of its function. At the bottom, there is a pagination control showing page 1 of 4.

Assistant Name	Description
Mr. Prompt	Helps you find & save prompts
Den flinke eleven	Find resources to save writing time
Lærerhjelp	Legger utredningsforbid
Kodehjelpen	Lær mer om
English Dictionary Master	English - Or help you explore and use various dictionaries to learn
Mat og helse: Mjølmeesteren	Mjølmeesteren - Hjelp deg med å finne ingredienser til oppskrifter
Udir - Råd om KI i skolen	Hjelp med å finne ut om KI i skolen
Læreplan NOR01-06 - Norsk	Lær mer om hvordan læreplanen for Norsk (2020) er

Multi-level

1. R&D
2. POTs / Demonstrations
3. Legislation and Normalisation
4. Production and User Support

Future Plans

R&D - Horizon Europe/Digital Europe Projects

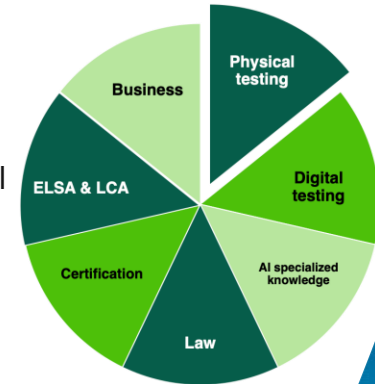
HE AI4EOSC

- ✓ The AI4EOSC Platform is a toolbox to develop AI models in the EOSC
 - ✓ The AI4OS dashboard. allow users to access computing resources to deploy, perform inference and train AI modules.
 - ✓ AI4OS (standing for AI 4 Open Science) is a collection of software and tools that allows to build cloud platforms for the development, training, sharing and deployment of AI applications, using distributed cloud resources. AI4OS is the software stack developed by the AI4EOSC project, and it is being used to build AI platforms for a variety of use cases.
- ✓ PSNC is involved in AI4EOSC Plant protection use case (AI based wheat and sugar beats and detection of the fungal diseases)

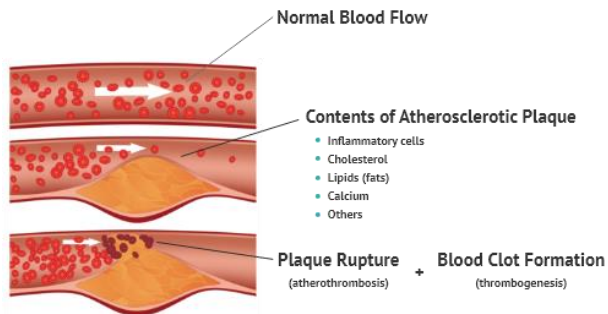
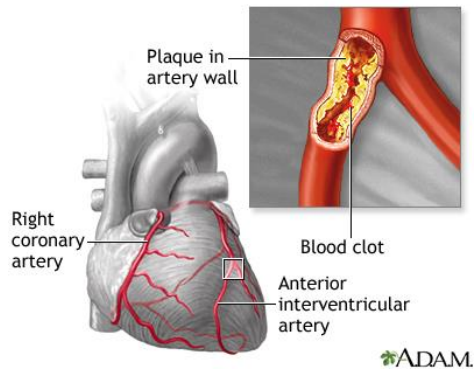


DEP AgriFoodTEF (The European Testing and Experimentation Facilities for Agrifood Innovation)

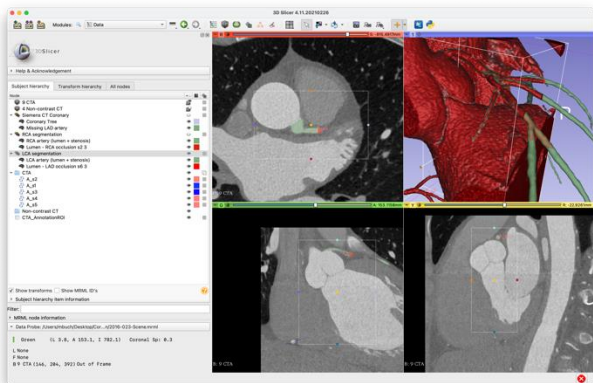
- ✓ The main goal of the project is to support technology companies from the agri-food industry in the development of their achievements in the field of AI and robotics and validation in real conditions and on real object
- ✓ Testing AI in real conditions and in closed areas in a controlled environment
- ✓ Validation of the AI solutions before market introduction and assistance in transitioning from TRL6 to TRL8.
- ✓ Access to 100+ demonstration farms in Poland
- ✓ Test sites for autonomous vehicles/robots
- ✓ Digital infrastructure for improving the AI models
- ✓ Domain data for training the AI models
- ✓ 60 mln Euro in 200+ 1services for companies (SME)



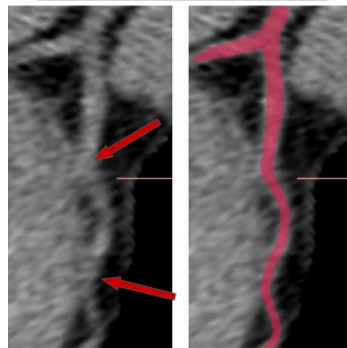
R&D - Coronary disease detection via Artificial Contrast Generation



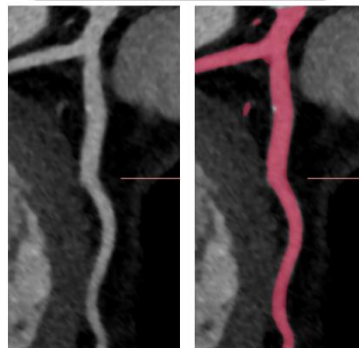
Graphics sources:
medlineplus.gov
elitecardiovascular.com



Non-contrast CT



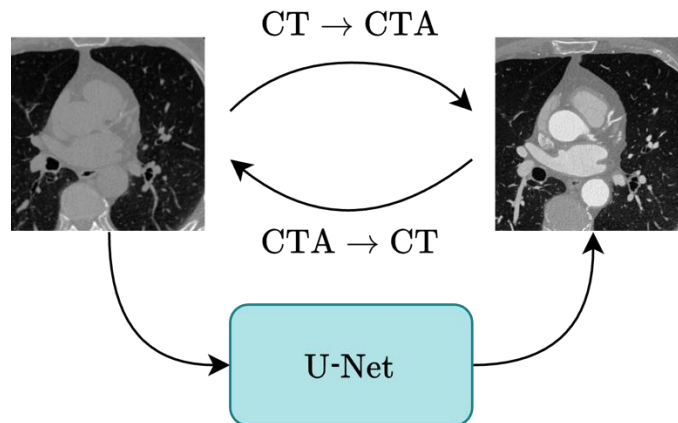
Contrast CT



Coronary disease detection via Artificial Contrast Generation

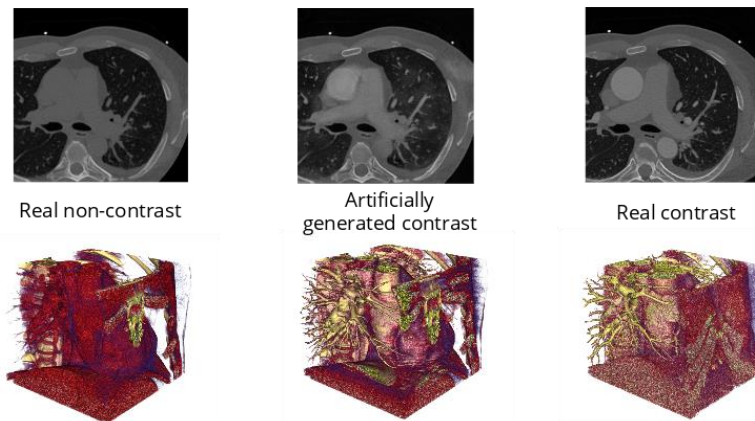
Generative AI models training

- Generating and removing contrast from computer tomography images
- Application of U-Net convolutional neural network



Computer tomography images

- 2D and 3D visualisations
- Results of AI-generated contrast in the middle

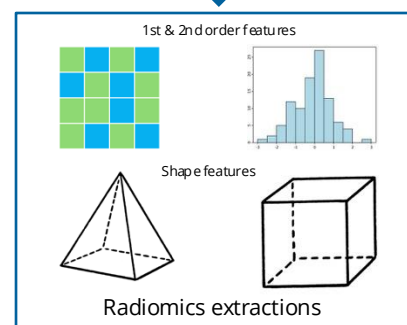
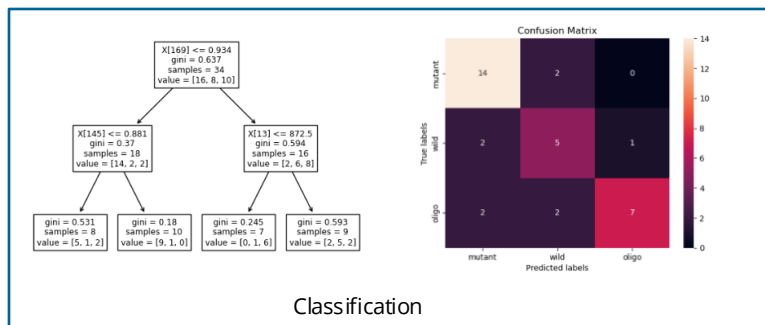
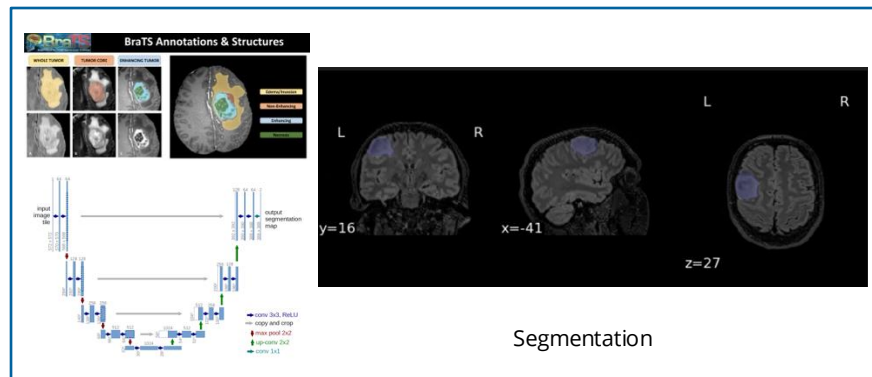
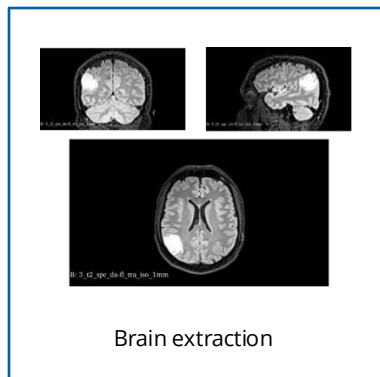


Imaging biomarkers for glioblastoma diagnosis and classification

Glioblastoma diagnosis and classification pipeline using AI

Tumor classes:

- Tumor necrosis (core),
- Enhancing tumor,
- Edema,
- Not-tumor



Participation in AI group next to Ministry of Digital Affairs

- ✓ The strategy for AI in Poland
- ✓ The AI data subgroup
- ✓ The International collaboration subgroup

RIAG – Research Infrastructure Advisory Group – EuroHPC JU

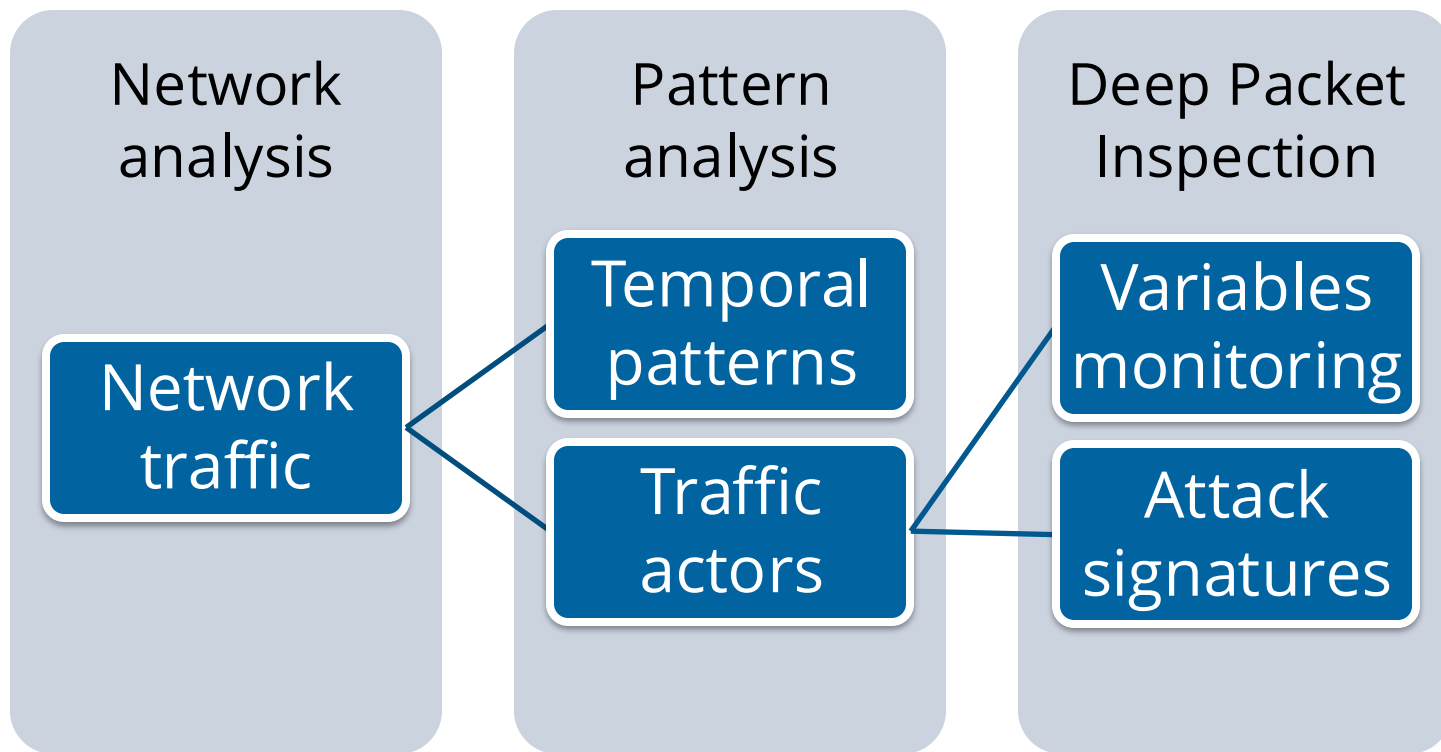
AI4EOSC consortium introduced LLM4EOSC

- ✓ The beta [LLM4EOSC API service](#) offers powerful capabilities for natural language processing and understanding, enabling researchers and scientists to enhance their workflows and projects. By leveraging advanced AI technologies, users can perform tasks such as text generation, summarization, question answering, and more, all within the context of the EOSC.

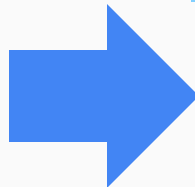
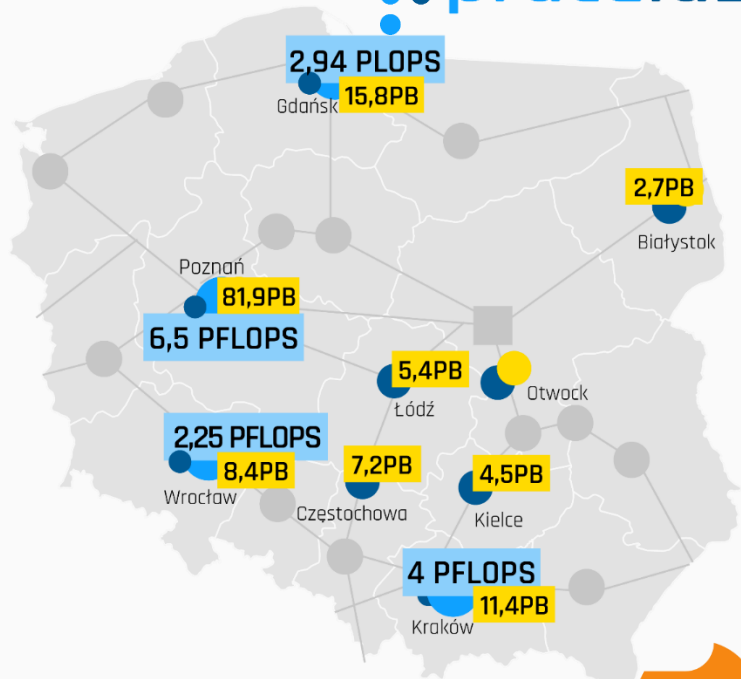
AI4 |  eosC

- „Scadvance – (SCADa Advance) – development of methods and solutions allowing to increase the industrial network security for companies in the power sector”
- "ALMA S.A., PSNC, PUT, Xnet Communications Sp. z o.o.”
- Protected Industrial protocols: PROFINET IO, DNP3, PROFIBUS DP, MODBUS TCP/IP, POWERLINK i CANopen
- PCSS
 - Machine Learning: IDS – anomaly detection in SCADA traffic
 - Cybersec: deploying SDLC (Secure Development Life Cycle) into the project
- Solution is currently available in the market from ICSec S.A.
 - Further invested and developed using Orlen VC

Machine learning and rule based SCADvance IDS



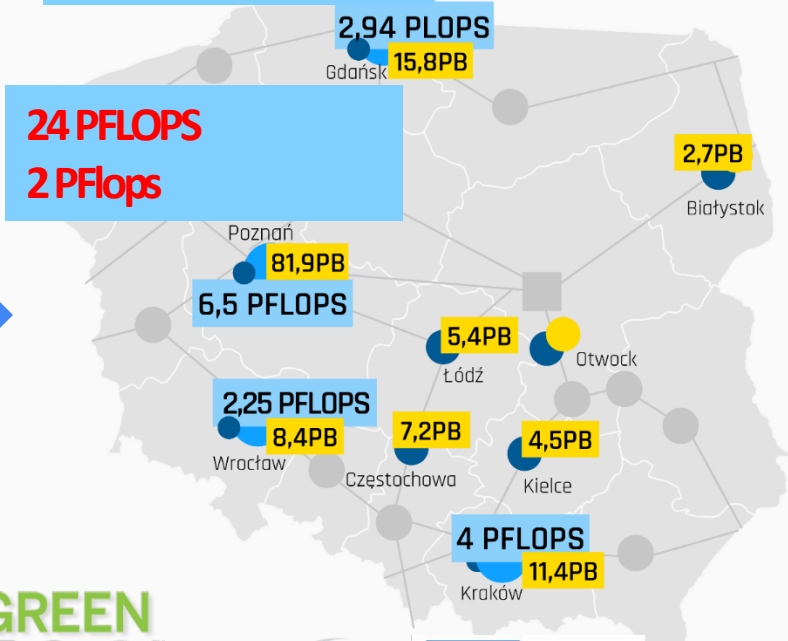
Production & User Support



11 PFLOPS

24 PFLOPS
2 PFlops

2,94 PLOPS
15,8PB



e-Infrastructure



Future

- AI at EOSC
 - National Data Storage – with AI “pieces”
 - National Node @Poland
- AI Factory
- AI trainings – for LLM security



DATACOMP

AI, HPC and Big Data Analysis for Grand Challenges



30 LAT DZIAŁALNOŚCI POZNAŃSKIEGO
CENTRUM SUPERKOMPUTEROWO-SIECIOWEGO

Switch_

AI Analysis

G. Hoevenaars + V. Vogel
Version 1, 23 October 2024

AI: product playing field (1)



Applications:

- Generic Chatbot with built-in data protection
- AI assistant for a certain organisation (comparable to student app)
- AI assistant for a certain discipline (like biology) or even a certain course
- AI generator of exam questions
- AI generator of key words (SEO, OER, etc.)

Market Definition:

- Especially teaching universities and universities of applied sciences
- Size dependent on use case
 - AI assistant: Per student calculate with CHF 7.50 as a first vector

Risks

- This market is going too fast (similar to cybersecurity).
- Everybody wants AI, but many started AI projects fail.
- People/knowhow level is low. We need to invest or seek partnerships.

AI: product playing field (2)



Technical Requirements:

- For AI Detection use cases, standard computational resources are probably sufficient.
- For the chatbot/service use cases a considerable amount of VRAM and GPU power are required if the application would be self hosted. It is a major need of the community to have a professionally-run infrastructure service
- Use the RAG technique to prevent hallucinations and to specialise on a certain subject
- Use smaller LLMs (based on OS) for smaller applications (e.g. Switch App)

Legal Challenges:

- GDPR, sensitive data protection laws
- EU AI act
 - Use of AI without any 4-eye principle
 - Use of AI for important decisions (such as grading an exam)

Proposal to start with Product Development



Infra

We provide a stable infrastructure with data security, which is easy to budget



Personal Services

We assist the universities by offering consultancy in the area of LLM choice, RAG, use cases



**Set-up ...
operate
LLM**

Switch can set-up the service, provide legal assistance & procurement, but also operate an LLM

Switch

South African National Research Network (SANReN)

Ajay Makna
Head of Operations
SIG-MSP Autumn 2024,
24 October 2024,
Poznan, Poland

A national Initiative of the Department of Science
and Innovation and implemented by the CSIR



science & innovation
Department
Science and Innovation
REPUBLIC OF SOUTH AFRICA



South African NREN: Structure



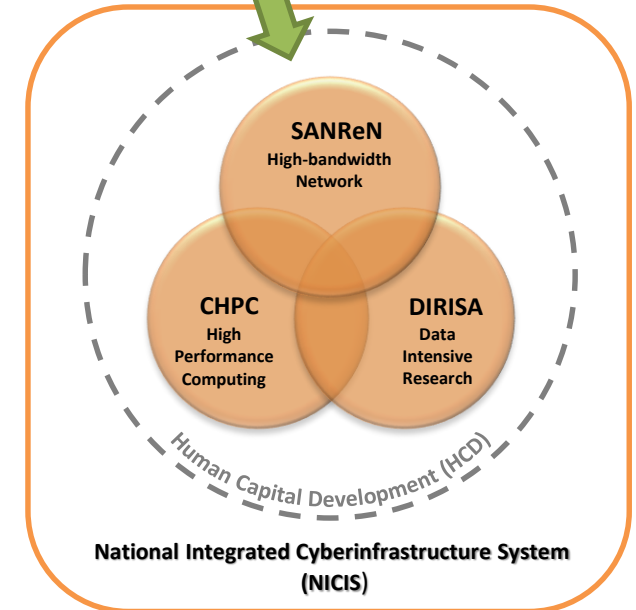
science & innovation
Department
Science and Innovation
REPUBLIC OF SOUTH AFRICA



A national initiative of the Department of Science and Innovation and implemented by the CSIR

NICIS Structure

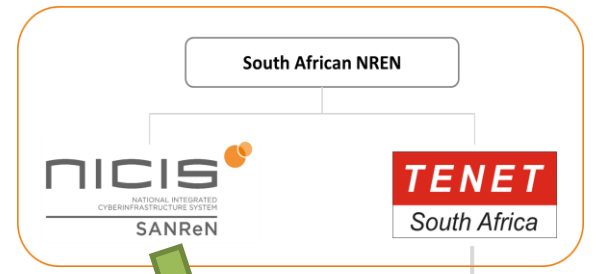
- No dedicated Comms and Marketing functions in SANReN



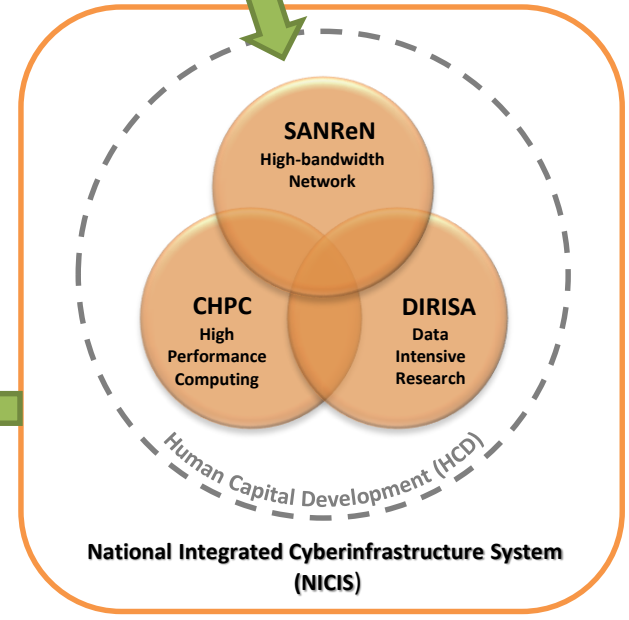
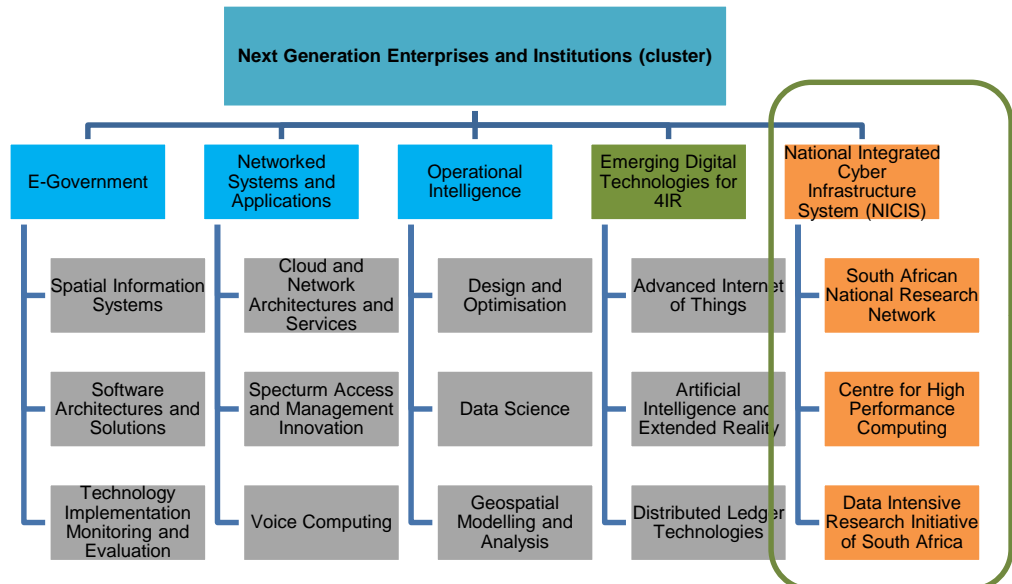
A national initiative of the Department of Science and Innovation and implemented by the CSIR



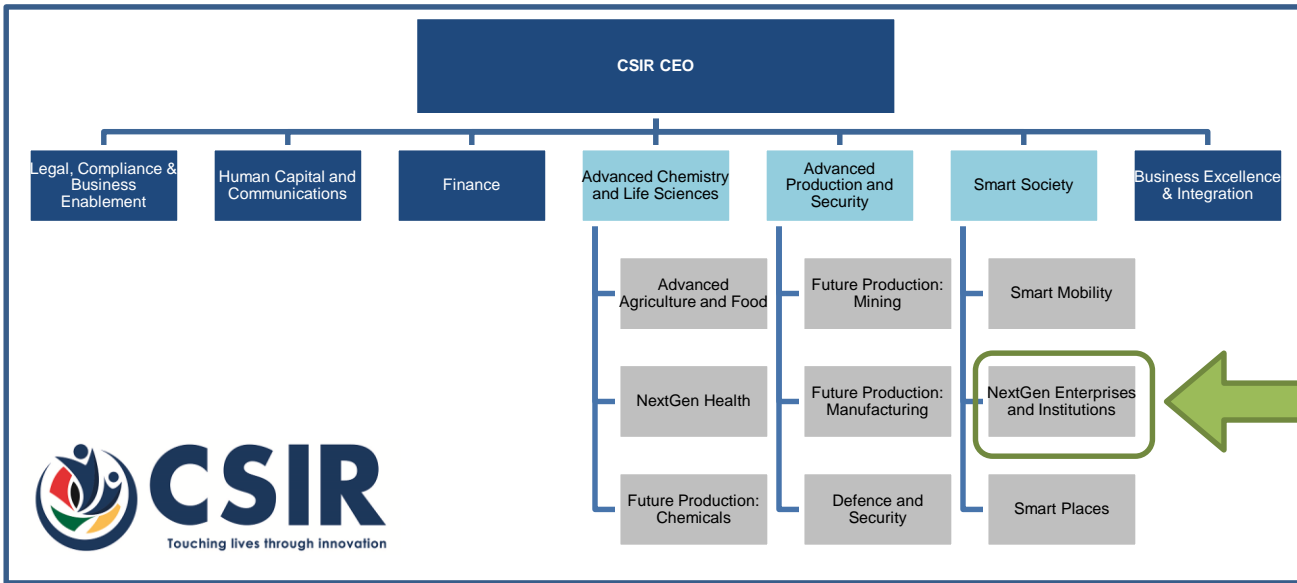
SANReN Placement



- No dedicated Comms and Marketing functions in SANReN



SANReN Placement



- No dedicated Comms and Marketing functions in SANReN
- Transactional in nature
 - Use CSIR Comms
 - Outsource

